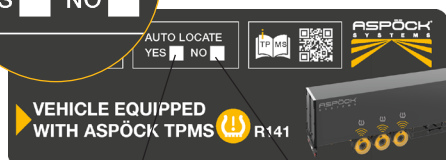




### Sensore TPMS



codice:  
75-0210-204



SI

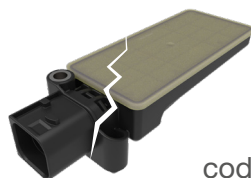
NO

+

Strumento di  
programmazione  
TPMS Aspöck  
codice:  
75-9012-101



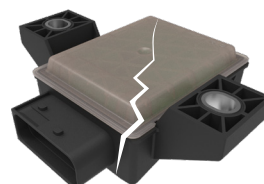
### Ricevitore aggiuntivo eRx



codice:  
75-0210-101



### Centralina TPMS, MaxRx



codice:  
75-0210-001



Software  
configurazioni  
semirimorchio



+

Strumento di  
programmazione  
TPMS Aspöck  
codice:  
75-9012-101



SCANSIONA IL QR CODE PER SCARICARE I FILE PDF