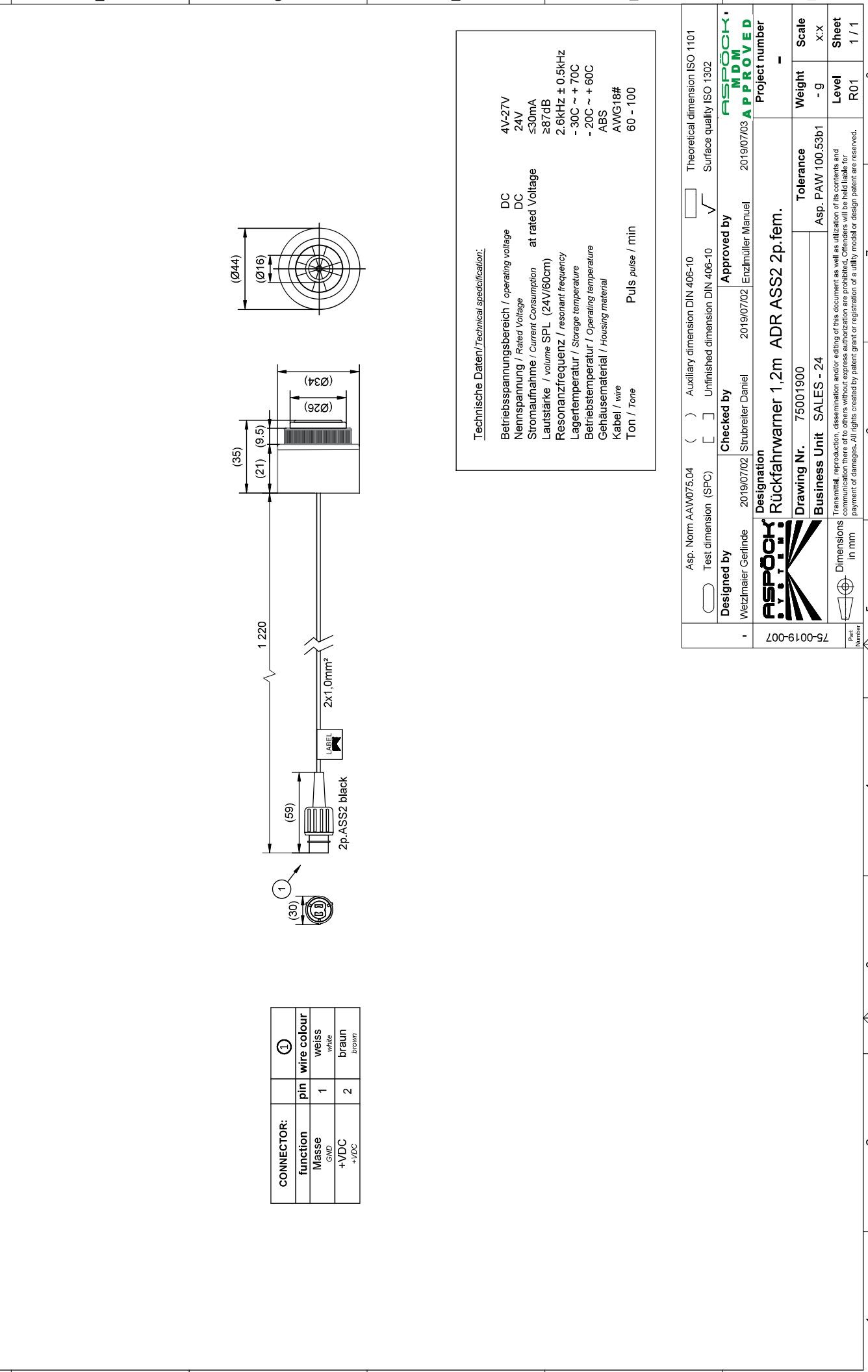


Level	Zone	ECI N°	Revision note	Date	Designed	Checked

Level	Zone	ECI N°	Revision note	Date	Designed	Checked

Level	Zone	ECI N°	Revision note	Date	Designed	Checked



Level	Zone	ECI N°	Revision note	Date	Designed	Checked

Technische Daten / Technical specification:

Betriebsspannungsbereich / operating voltage DC
 Nennspannung / Rated Voltage DC
 Stromaufnahme / Current Consumption at rated Voltage
 Lautstärke / volume SPL (24V/60cm) ≥87dB
 Resonanzfrequenz / resonant frequency 2.6kHz ± 0.5kHz
 Lagertemperatur / Storage temperature -30C ~ +70C
 Betriebstemperatur / Operating temperature -20C ~ +60C
 Gehäusematerial / Housing material ABS
 Kabel / wire AWG18#
 Ton / Tone Puls pulse / min 60 - 100



Asp. Norm AAW075.04	()	Auxiliary dimension DIN 406-10	<input type="checkbox"/>	Theoretical dimension ISO 1101
Test dimension (SPC)	[]	Unfinished dimension DIN 406-10	<input checked="" type="checkbox"/>	Surface quality ISO 1302
Designed by	Wetzlarer Geflinde	2019/07/02	Strubreiter Daniel	2019/07/02
Checked by				
Approved by				
ASPOÖK				
MDM APPROVED				
Project number -				
Designation Rückfahrwarner 1,2m ADR ASS2 2p.fem.				
Drawing Nr. 75001900				
Business Unit SALES - 24				
Tolerance Asp. PAW 100.53b1				
Weight - 9				
Scale X:X				
Level R01				
Sheet 1 / 1				

75-0019-007	Part Number	Dimensions in mm	Dimensions in mm
Designation Rückfahrwarner 1,2m ADR ASS2 2p.fem.			
Drawing Nr. 75001900			
Business Unit SALES - 24			
Tolerance Asp. PAW 100.53b1			
Weight - 9			
Scale X:X			
Level R01			
Sheet 1 / 1			